

# HSE Series

This compact, portable, hot water pressure washer offers quiet operation and is suitable for a wide variety of industrial applications.

ELECTRIC - DIRECT DRIVE

PORTABLE

Hot Water Pressure Washers



HSE-1002-0M10

**Pump:** Direct drive triplex piston General pump with ceramic plungers • Stainless-steel and brass unloader • Forged brass manifold • Thermal relief valve • High pressure detergent injection (low pressure on HSE-1002-0M11)

**Motor:** Totally enclosed fan-cooled electric motor with manual thermal overload protection • Solid state electronic ignition

**Frame:** Reinforced powder coated steel tube frame with center balanced lifting hook • Powder coated steel hose reel mounting bracket • Electric cord hanger • Powder coated steel gun/wand holder • Solid steel threaded axles • Pneumatic tires (4) with tubes • Locking tire brake

**Components:** Complete system diagnostic board • Float tank (N/A on HSE-1002-0M11) • Pressure and high limit safety controls • No. 1 or No. 2 diesel or kerosene fired burner (Bio-fuel not approved at this time) • Polyethylene burner fuel tank • Easy coil drain helps prevent freezing in cold weather

**Accessories:** 50-foot x 3/8-inch steel wire-braided pressure hose with screw connects, swivel and bend restrictors • Professional-grade insulated trigger gun with safety lock-off • Adjustable pressure insulated dual lance with 15-degree fixed and detergent nozzle

**Miscellaneous:** Temperature rise 150°F/66°C above ambient, maximum outlet temperature is 200°F • Water output temperature is 190°-200°F (Excludes HSE-1002-SM10) • Water output temperature for “wet” steam is approximately 250°F (HSE-1002-SM10) • Operates at 650-PSI in “wet” steam mode (HSE-1002-SM10)



High quality fuel/water separator ensures clean fuel supply



Energy efficient top-fired powder coated heat exchanger designed for convenient troubleshooting and easy maintenance



35-foot power cord with in-line GFCI which meets required CSA certification

Model No.	PSI	GPM	HP/Motor	Plug Type	Burner Fuel Tank Cap.	Burner Fuel Cons.	Dimensions (LxWxH)	Ship Wt.	Net Wt.
HSE-1002-0M11*	1000	2.0	1.5/120V, 1Ø, 15.0A	NEMA 5-15P	4.0 gallon	1.33 gph	34in.x29in.x33in.	368 lbs.	245 lbs.
HSE-1002-0M10	1000	2.0	1.5/120V, 1Ø, 15.0A	NEMA 5-15P	4.0 gallon	1.33 gph	34in.x29in.x33in.	368 lbs.	245 lbs.
HSE-1002-SM10^	1000	2.0	1.5/120V, 1Ø, 15.0A	NEMA 5-15P	4.0 gallon	1.33 gph	34in.x29in.x33in.	368 lbs.	245 lbs.
HSE-1502-0M10	1500	2.0	2.0/120V, 1Ø, 19.0A	NEMA 5-20P	4.0 gallon	1.33 gph	34in.x29in.x33in.	373 lbs.	250 lbs.
HSE-2003-0M10	2000	2.8	4.0/230V, 1Ø, 18.0A	NEMA L6-20P	4.0 gallon	1.33 gph	34in.x29in.x33in.	393 lbs.	270 lbs.

\*Low pressure detergent injection.  
^Combination wet steam cleaner/pressure washer.



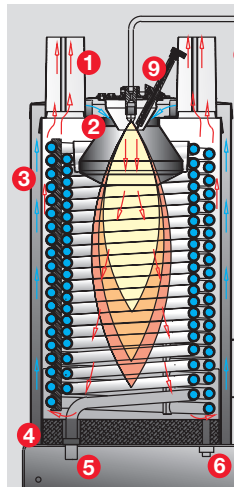
NEMA 5-15P, 15-amp plug



NEMA 5-20P, 20-amp plug



NEMA L6-20P, 20-amp plug



### Burner Design

1. Large capacity exhaust tubes allow proper exhausting of combustion gases.
2. When troubleshooting a burner problem, the spark can easily be checked within seconds through the convenient sight glass.
3. Continuous wrap tubing coil eliminates butt welds which can cause leaks. The coil is lightweight and designed for easy replacement.
4. The insulation pad is designed for easy replacement and durability.
5. Coil inlet/outlet connections with convenient coil drain, allows for easy draining of all water in coil to prevent freezing.
6. The combustion chamber drain allows for easy draining of water or fuel build-up.
7. Incoming air flows between outside wrap and inner wrap eliminating the need for coil insulation.
8. Single wire-braided fuel hose prevents leakage, protects the system and won't crack or kink.
9. Electrodes and nozzle assembly are at top of burner for easy maintenance and troubleshooting.

**1** YEAR LIMITED  
ELECTRIC MOTOR WARRANTY

**2** YEAR LIMITED  
PARTS & LABOR WARRANTY



**3** YEAR LIMITED  
COIL WARRANTY

**7** YEAR LIMITED  
PUMP WARRANTY

For the ultimate in electric, hot water pressure washers, opt for this belt drive unit that offers larger volume capacity and quiet operation.

# HSE Series

PORTABLE

ELECTRIC - BELT DRIVE



HSE-3504-OM10

**Pump:** Belt drive triplex piston General pump with ceramic plungers • Stainless-steel and brass unloader valve • Forged brass manifold • Thermal relief valve • High pressure detergent injection

**Motor:** Totally enclosed fan-cooled electric motor with manual thermal overload protection • 35-foot power cord (ground fault circuit interrupter on HSE-2504-OM10)

**Frame:** Reinforced powder coated steel tube frame with center balanced lifting hook • Powder coated steel hose reel mounting bracket • Electric cord hanger • Powder coated steel gun/wand holder • Solid steel threaded axles • Pneumatic tires with tubes (4) • Locking tire brake

**Components:** Complete system diagnostic board • Float tank • Pressure and high limit safety controls • No. 1 or No. 2 diesel or kerosene fired burner (Bio-fuel not approved at this time) • Polyethylene burner fuel tank • Easy coil drain helps prevent freezing in cold weather • Electrodes are self-gapping for proper ignition and combustion

**Accessories:** 50-foot x 3/8-inch steel wire-braided pressure hose with screw connects, swivel and bend restrictors • Professional-grade insulated trigger gun with safety lock-off • Adjustable pressure insulated dual lance with 15-degree fixed and detergent nozzle

**Miscellaneous:** Temperature rise 150°F/66°C above ambient, maximum outlet temperature is 200°F

Hot Water Pressure Washers



High quality fuel filter/water separator ensures clean fuel supply



Energy-efficient top-fired powder coated heat exchanger designed for convenient troubleshooting and easy maintenance



Heavy-duty dual cogged belt drive system to prevent slippage

Model No.	PSI	GPM	HP/Motor	Plug Type	Burner Fuel Tank Cap.	Burner Fuel Cons.	Dimensions (LxWxH)	Ship Wt.	Net Wt.
HSE-2504-OM10	2500	3.2	6.0/230V, 1Ø, 25.0A	NEMA L6-30P	10.0 gallon	2.10 gph	49.5in.x28in.x40.5in.	699 lbs.	569 lbs.
HSE-2504-OM30	2500	3.2	6.0/230-460V, 3Ø, 16.0A	NEMA L15-20P	10.0 gallon	2.10 gph	49.5in.x28in.x40.5in.	688 lbs.	558 lbs.
HSE-3004-OM10	3000	3.5	8.0/230V, 1Ø, 36.0A	NEMA 6-50P	10.0 gallon	2.10 gph	49.5in.x28in.x40.5in.	737 lbs.	607 lbs.
HSE-3004-OM30	3000	3.5	8.0/230-460V, 3Ø, 24.0A	NEMA L15-30P	10.0 gallon	2.10 gph	49.5in.x28in.x40.5in.	732 lbs.	602 lbs.
HSE-3504-OM10	3500	3.3	10.0/230V, 1Ø, 39.0A	NEMA 6-50P	10.0 gallon	2.10 gph	49.5in.x28in.x40.5in.	761 lbs.	631 lbs.
HSE-3504-OM30	3500	3.3	10.0/230-460V, 3Ø, 28.0A	NEMA L15-30P	10.0 gallon	2.10 gph	49.5in.x28in.x40.5in.	742 lbs.	612 lbs.



NEMA L15-20P, 20-amp plug



NEMA L15-30P, 30-amp plug



NEMA L6-30P, 30-amp plug



NEMA 6-50P, 50-amp plug

**Options** (Consult price list or [www.mitm.com](http://www.mitm.com) for more information on option descriptions and qualifying models)

- HX-0070 Auto start/stop
- HX-0071 - HX-0073 Auto start/stop-steam
- HX-0074 Auto start/stop-CAD cell
- HX-0075 - HX-0077 Auto start/stop-steam/CAD cell
- HX-0085 - HX-0087 460V
- HX-0088 Skid feet
- HX-0161 Hour meter
- TX-1304-W Puncture-proof tires

**1** YEAR LIMITED  
ELECTRIC MOTOR WARRANTY

**2** YEAR LIMITED  
PARTS & LABOR WARRANTY



**3** YEAR LIMITED  
COIL WARRANTY

**7** YEAR LIMITED  
PUMP WARRANTY

# HSP Series

The HSP Series is designed with the Mi-T-M patented electro magnetic firing system, which means there is no need for a 12V battery, generator, blower motor and alternator; therefore, making these units especially maintenance friendly.

GASOLINE - DIRECT DRIVE

PORTABLE

Hot Water  
Pressure Washers



HSP-3504-3MGH

**Pump:** Direct drive triplex ceramic piston AR pump - Stainless-steel and brass unloader valve - Forged brass manifold - Thermal relief valve - Low pressure detergent injection  
**Engine:** Performance-proven engine with low-oil protection and recoil start

**Frame:** Reinforced powder coated steel tube frame with center balanced lifting hook - Powder coated steel hose reel mounting bracket - Wand holder - Solid steel threaded axles - Pneumatic tires with tubes (4) - Locking tire brake

**Components:** Complete system diagnostic board - Pressure and high limit safety controls - No. 1 or No. 2 diesel or kerosene fired burner (Bio-fuel not approved at this time) - Polyethylene burner fuel tank - Easy coil drain helps prevent freezing in cold weather

**Accessories:** 50-foot x 3/8-inch steel wire-braided pressure hose with screw connects, swivel and bend restrictors - Professional-grade insulated trigger gun with safety lock-off - Adjustable pressure insulated dual lance with 15-degree fixed and detergent nozzle

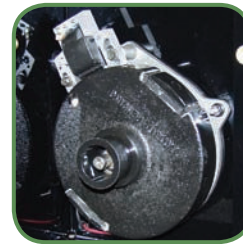
**Miscellaneous:** Temperature rise 150°F/66°C above ambient, maximum outlet temperature is 200°F



High quality fuel filter/water separator ensures clean fuel supply



Energy efficient top-fired powder coated heat exchanger designed for convenient troubleshooting and easy maintenance



**Patented** Electro Magnetic Firing (EMF) system

Model No.	PSI	GPM	Displacement*/Engine	Gas Tank Cap.	Burner Fuel Tank Cap.	Burner Fuel Cons.	Dimensions (LxWxH)	Ship Wt.	Net Wt.
HSP-2403-3MGH	2400	2.6	196cc Honda OHV	0.97 gallon	4.0 gallon	1.53 gph	38in.x30in.x38in.	385 lbs.	269 lbs.
HSP-2403-3MGR	2400	2.6	211cc Subaru OHC	0.95 gallon	4.0 gallon	1.53 gph	38in.x30in.x38in.	385 lbs.	269 lbs.
HSP-3003-3MGH	3000	2.9	270cc Honda OHV	1.59 gallon	5.5 gallon	1.84 gph	43in.x30in.x41in.	530 lbs.	407 lbs.
HSP-3003-3MGR	3000	2.9	265cc Subaru OHC	1.59 gallon	5.5 gallon	1.84 gph	43in.x30in.x41in.	530 lbs.	407 lbs.
HSP-3004-3MGH	3000	3.5	389cc Honda OHV	1.70 gallon	5.5 gallon	2.14 gph	43in.x30in.x41in.	551 lbs.	428 lbs.
HSP-3504-3MGH	3500	3.3	389cc Honda OHV	1.70 gallon	5.5 gallon	2.14 gph	43in.x30in.x41in.	551 lbs.	428 lbs.

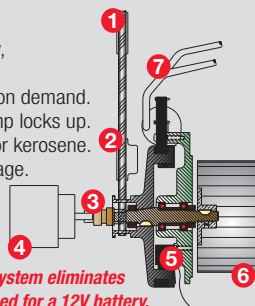
\*As rated by engine manufacturer.

## Options (Consult price list or [www.mitm.com](http://www.mitm.com) for more information on option descriptions and qualifying models)

20-9050	Rain cap
HX-0098	Electric start (battery included)
TX-1004-W	Puncture-proof tires
TX-1304-W	Puncture-proof tires

## Patented EMF System

1. Engine sheave, dual set screw mount, maintains proper alignment of pump shaft key, preventing unnecessary wear of pump and engine shaft.
2. The belt tension sheave creates proper belt tension so fuel pump discharges fuel upon demand.
3. The long lasting, non-corrosive flexible drive coupler protects EMF system if fuel pump locks up.
4. Fuel pump is a durable high quality pump that will deliver No. 1 or No. 2 diesel fuel or kerosene.
5. Stator coil/magnets are a low maintenance system that provide solenoid control voltage.
6. Fan provides burner air for proper combustion and clean exhaust smoke. It has an easily accessible air flow control.
7. Ignition coil provides voltage to electrodes for proper spark voltage, allowing accurate ignition of fuel every time the trigger is pulled. The ignition coil has a long life, is easily replaced and has a proven track record in the industry.



EMF system eliminates the need for a 12V battery.

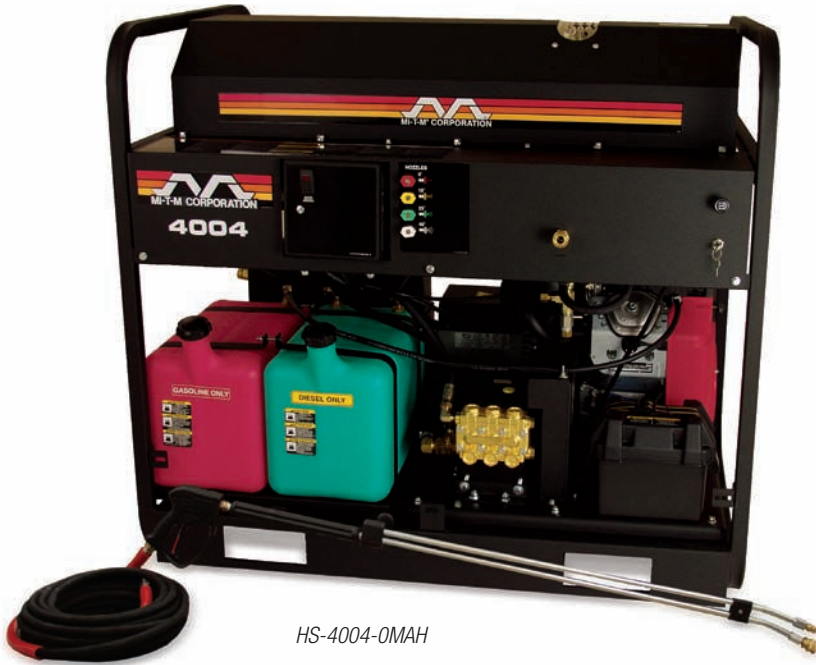


Designed, manufactured and tested in the Mi-T-M tradition of quality, this heavy-duty belt drive series is our most popular choice for single- and dual-axle trailer-mount options.

# HS Series

STATIONARY - SKID-MOUNT

GASOLINE/DIESEL - BELT DRIVE



HS-4004-0MAH

**Pump:** Belt drive triplex piston General or AR pump with ceramic plungers • Factory preset unloader • Forged brass manifold • 80-mesh, high volume, stainless-steel screen inlet water strainer

**Components:** Pressure relief valve protects against excessive system pressure • No. 1 or No. 2 diesel or kerosene fired burner (Bio-fuel not approved at this time) • Polyethylene burner and engine fuel tanks • 1/2-inch schedule 80-coil with stainless-steel wrap • Heavy-duty dual cogged belt drive systems • High quality fuel filter/water separator ensures clean fuel supply

**Accessories:** Quick connect nozzles (0°, 15°, 25° and 40°) • 50-foot x 3/8-inch steel wire-braided pressure hose with quick connects, swivel and bend restrictors • Professional-grade insulated trigger gun with safety lock-off • Adjustable pressure insulated dual lance with safety lock-off

**Miscellaneous:** Temperature rise 150°F/66°C above ambient, maximum outlet temperature is 200°F

Hot Water Pressure Washers



2900-watt generator



Performance-proven industrial gasoline or diesel engines with electric start (battery included)



Heavy-duty powder coated steel square tube frame

Model No.	PSI	GPM	Displacement* or HP/Engine	Gas Tank Cap.	Burner Fuel Tank Cap.	Burner Fuel Cons.	Dimensions (LxWxH)	Ship Wt.	Net Wt.
HS-3005-0MGV	3000	4.8	480cc Vanguard OHV	10.0 gallon	10.0 gallon	3.37 gph	50in.x34in.x45in.	816 lbs.	710 lbs.
HS-3006-0MDK <sup>^</sup>	3000	5.6	15.5 HP Kubota	10.0 gallon	10.0 gallon	3.37 gph	56.5in.x34in.x45in.	940 lbs.	836 lbs.
HS-3505-0MDK <sup>^</sup>	3500	4.7	15.5 HP Kubota	10.0 gallon	10.0 gallon	3.37 gph	56.5in.x34in.x45in.	940 lbs.	836 lbs.
HS-3505-0MGH	3500	4.7	614cc Honda OHV	10.0 gallon	10.0 gallon	3.37 gph	50in.x34in.x45in.	854 lbs.	750 lbs.
HS-3506-0MGH	3500	5.6	670cc Honda OHV	10.0 gallon	10.0 gallon	3.37 gph	50in.x34in.x45in.	864 lbs.	760 lbs.
HS-4004-0MAH <sup>#</sup>	4000	4.0	614cc Honda OHV	10.0 gallon	10.0 gallon	3.37 gph	50in.x34in.x45in.	854 lbs.	750 lbs.
HS-4005-0MDK <sup>^+</sup>	4000	4.5	15.5 HP Kubota	10.0 gallon	10.0 gallon	3.37 gph	56.5in.x34in.x45in.	940 lbs.	836 lbs.

\*As rated by engine manufacturer.

<sup>^</sup>Diesel unit.

<sup>#</sup>Models equipped with AR pump, all other models equipped with General pumps.

<sup>+</sup>Models equipped with trapping unloader, all other models equipped with K7 flow actuated unloader.

**Options** (Consult price list or [www.mitm.com](http://www.mitm.com) for more information on option descriptions and qualifying models)

- 20-1070A18 Removable painted front panel
- HX-0130 Three-way ball valve
- HX-0131 High pressure detergent injector (K7)
- HX-0133, HX-0135 & HX-0136 Steam combination 250°F (K7)
- HX-0138 - HX-0142 Steam combination 250°F (requires trapping unloader)
- HX-0143 Trapping unloader
- HX-0144 Dual gun (requires trapping unloader)
- HX-0145 Adjustable temperature control
- HX-0146 Hour meter
- HX-0147 Four (4) point lifting capability
- HX-0148 Detergent (requires trapping unloader)
- AW-5740-0000 Wheel kit

Note: To order options HX-0138 to HX-0142, HX-0144 or HX-0148, you must also order option HX-0143 (not required for 4000-PSI models, which already come equipped with trapping unloader).

**2** YEAR LIMITED  
PARTS & LABOR WARRANTY

**2** YEAR LIMITED  
HONDA ENGINE WARRANTY

**2** YEAR LIMITED  
VANGUARD ENGINE WARRANTY

CSA CERTIFIED

**3** YEAR LIMITED  
COIL WARRANTY

**3** YEAR LIMITED  
KUBOTA ENGINE WARRANTY

**7** YEAR LIMITED  
PUMP WARRANTY

# HG Series

This stationary natural gas/LP unit offers the convenience of a steady fuel source - the perfect pressure washer solution for wash bays.

NATURAL GAS/LP - BELT DRIVE

STATIONARY - SKID-MOUNT

Hot Water  
Pressure Washers



HG-2004-1230

**Pump:** Factory preset trapping unloader • Thermal relief valve • Adjustable high pressure detergent injection  
**Motor:** Open drip-proof electric motor with thermal overload protection  
**Burner:** Natural gas or LP gas-fired (vapor only) natural draft with aspirating-type burner, 10-inch stack  
**Frame:** Powder coated steel side panels and frame  
**Components:** Pressure switch and over-pressure safety controls • 24-volt control system • Polyethylene float tank (4-gallon with in-line screen filter) • 1/2-inch schedule 80-coil heat exchanger • Adjustable thermostat  
**Accessories:** Quick connect nozzles (0°, 15°, 25° and 40°) • 50-foot x 3/8-inch steel wire-braided pressure hose with quick connects, swivel and bend restrictors • Professional-grade insulated trigger gun with safety lock-off • Adjustable pressure insulated dual lance with fixed detergent nozzle  
**Miscellaneous:** Maximum outlet temperature is 200°F (250°F/121°C outlet temperature with steam option) • 338,000-BTU per hour - Natural gas • 326,000-BTU per hour - LP gas (vapor only)



Belt drive triplex ceramic plunger General pump



Electronic ignition with standing pilot light



21-inch draft diverter included; has 10-inch opening

Model No.	PSI	GPM	HP/Motor	Dimensions (LxWxH)	Ship Wt.	Net Wt.
HG-2004-1208	2000	4.2	6.0/208V, 1Ø, 28.2A	56.5in.x29in.x49.75in.	844 lbs.	724 lbs.
HG-2004-3208	2000	4.2	6.0/208V, 3Ø, 18.5A	56.5in.x29in.x49.75in.	844 lbs.	724 lbs.
HG-2004-1230	2000	4.2	6.0/230V, 1Ø, 25.5A	56.5in.x29in.x49.75in.	844 lbs.	724 lbs.
HG-2004-3230	2000	4.2	6.0/230V, 3Ø, 16.0A	56.5in.x29in.x49.75in.	844 lbs.	724 lbs.
HG-2004-3460	2000	4.2	6.0/460V, 3Ø, 8.0A	56.5in.x29in.x49.75in.	844 lbs.	724 lbs.
HG-3004-1208	3000	3.9	8.0/208V, 1Ø, 40.5A	56.5in.x29in.x49.75in.	878 lbs.	758 lbs.
HG-3004-3208	3000	3.9	8.0/208V, 3Ø, 23.0A	56.5in.x29in.x49.75in.	878 lbs.	758 lbs.
HG-3004-1230	3000	3.9	8.0/230V, 1Ø, 37.0A	56.5in.x29in.x49.75in.	878 lbs.	758 lbs.
HG-3004-3230	3000	3.9	8.0/230V, 3Ø, 20.0A	56.5in.x29in.x49.75in.	878 lbs.	758 lbs.
HG-3004-3460	3000	3.9	8.0/460V, 3Ø, 10.0A	56.5in.x29in.x49.75in.	878 lbs.	758 lbs.
HG-3004-3575	3000	3.9	8.0/575V, 3Ø, 8.0A	56.5in.x29in.x49.75in.	878 lbs.	758 lbs.

**Options** (Consult price list or [www.mitm.com](http://www.mitm.com) for more information on option descriptions and qualifying models)

- HX-0104, HX-0112 K7 unloader (flow activated) (auto start/stop N/A)
- HX-0105 Liquid propane (vapor only)
- HX-0106 Hour meter
- HX-0107 Time delay shutdown
- HX-0108 (1) Remote station (auto start/stop N/A)
- HX-0109 Time delay shutdown and first remote box (kit option)
- HX-0110 Additional remotes (up to 3)
- HX-0111 Auto start/stop
- HX-0120, HX-0121 250°F steam upgrade
- HX-0124 Auto start/stop and first remote option

**Note:** You cannot order HX-0107 & HX-0108 together, you will need to order HX-0109 instead. HX-0107 & HX-0108 can be ordered separately.

**NATURAL GAS INSTALLATION RECOMMENDATION:**

Mi-T-M's natural gas pressure washer must have a clearance of 2-feet on all sides of the unit and 4-feet above the unit.

**Gas Supply Line:**

- Natural Gas**  
7- to 8-inch water column input
- LP Gas**  
12- to 14-inch water column input

**Recommended Pipe Sizes for Gas Supply Line:**

Distance to Unit from Regulator	Pipe Size
0- to 50-feet	1 1/2-inch 1PS
50- to 100-feet	2-inch 1PS
100- to 200-feet	2 1/2-inch 1PS

Distance to Unit from Regulator	Pipe Size
0- to 50-feet	1-inch 1PS
50- to 100-feet	1 1/2-inch 1PS
100- to 200-feet	1 3/4-inch 1PS

**1 YEAR LIMITED ELECTRIC MOTOR WARRANTY**

**2 YEAR LIMITED PARTS & LABOR WARRANTY**

**3 YEAR LIMITED COIL WARRANTY**

**7 YEAR LIMITED PUMP WARRANTY**



Certified for 0- to 2000-feet above sea level

Want to turn up the temperature on your Mi-T-M cold water pressure washer? This natural gas/LP heater module is the perfect add-on to the cold water washer you already have in operation.

# HGM Series

STATIONARY

NATURAL GAS/LP HEATER MODULE



HGM-3506-0E10 shown with JP-2703-0MRB

Hot Water Pressure Washers

**Frame:** Powder coated frame assembly

**Components:** Pressure relief valve • 24-volt control system • 1/2-inch schedule 80-vertical coil assembly • Quality gas valve with regulator (max. input 1/2-PSI) • Inlet and outlet quick connects • Electronic ignition with standing pilot • On/off burner switch and adjustable thermostat

**Accessories:** 12-foot x 3/8-inch jumper hose with quick connects included (to hook up to existing pressure washer)

**Miscellaneous:** Incoming power 120-volt or 240-volt, single-phase



Natural gas or LP gas-fired natural draft with aspirating-type burner; 10-inch stack



Fork truck accessible



21-inch draft diverter included; has 10-inch opening

Model No.	Max. PSI	Max. GPM	Nat. Gas BTU	LP-Gas BTU	Dimensions (LxWxH)	Ship Wt.	Net Wt.
HGM-3506-0E10	3500	6.0	338,000 per hour	326,000 per hour	24.25in.x26.25in.x49.75in.	446 lbs.	326 lbs.

**Options** (Consult price list or [www.mitm.com](http://www.mitm.com) for more information on option descriptions and qualifying models)

- HX-0105 Liquid propane (vapor only)
- HX-0129 460V, 3-Phase incoming power option

**NATURAL GAS INSTALLATION RECOMMENDATION:**

Mi-T-M's natural gas pressure washer must have a clearance of 2-feet on all sides of the unit and 4-feet above the unit.

**Gas Supply Line:**  
Natural Gas

- 7- to 8-inch water column input
- LP Gas
- 12- to 14-inch water column input

**Recommended Pipe Sizes for Gas Supply Line:**

Natural Gas	
Distance to Unit from Regulator	Pipe Size
0- to 50-feet	1 1/2-inch 1PS
50- to 100-feet	2-inch 1PS
100- to 200-feet	2 1/2-inch 1PS
LP Gas	
Distance to Unit from Regulator	Pipe Size
0- to 50-feet	1-inch 1PS
50- to 100-feet	1 1/2-inch 1PS
100- to 200-feet	1 3/4-inch 1PS

